

Activon

Manuka Honey



What is Activon Manuka Honey?

- **Activon Manuka Honey is made from nectar gathered from *Leptospermum* plants by bees in New Zealand**
- **The properties of Activon Manuka Honey provide wound healing benefits not found in other types of dressings:**
 - Anti-microbial
 - Debridement and de-sloughing
 - Malodour reduction
- **Activon Manuka Honey also protects the wound bed, providing the moist wound healing environment that is known to promote faster healing¹**



Naturally anti-microbial with no known resistance

- **The unique anti-microbial modes of action of Activon Manuka Honey:**
 - High levels of methylglyoxal (MGO)
 - High acidity
 - Osmotic effect
 - High sugar, low water content
 - Production of hydrogen peroxide
- **Activon Manuka Honey is effective against wound invading bacteria, including:**
 - Staphylococcus aureus
 - Pseudomonas aeruginosa
 - Anti-biotic resistant MRSA and VRE

Safe and effective debridement and desloughing

Necrotic tissue and slough can harbour bacteria and impede wound healing

Removing necrotic and sloughy tissue quickly helps to restore the wound's healing trajectory

Activon Manuka Honey:

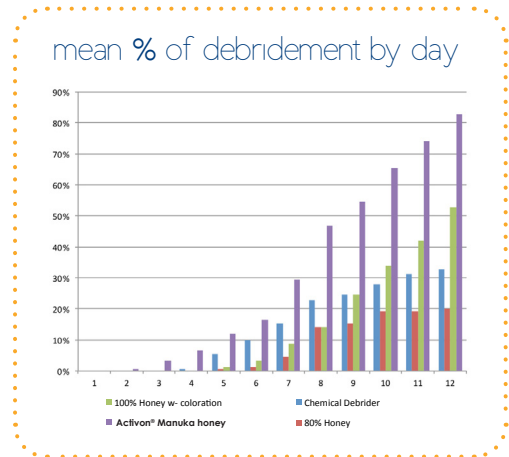
- Promotes autolytic debridement through osmosis
- Creates a hostile environment for slough production due to low pH

Safe:

- Only targets necrotic or sloughy tissue

Effective:

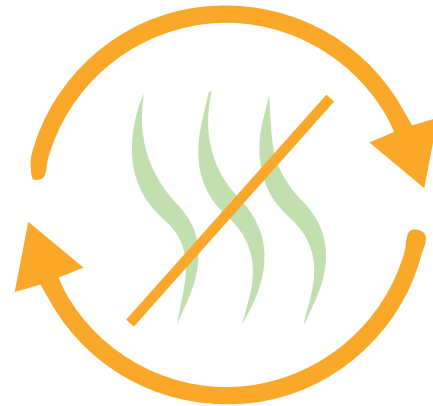
- Significantly better at debridement



Average debridement by day in wounds treated with honey and chemical debridement agent²

Deodorising action to reduce malodour

- Wound odour can prevent some patients from socialising, which may lead to depression and have a serious impact of Quality of Life (QoL)
- When bacteria multiply, they create gases that have unpleasant smells
- Activon Manuka Honey changes the gases produced to ones that are less odorous



Activon® Manuka Honey works at the source of the odour to eliminate, not just mask, it

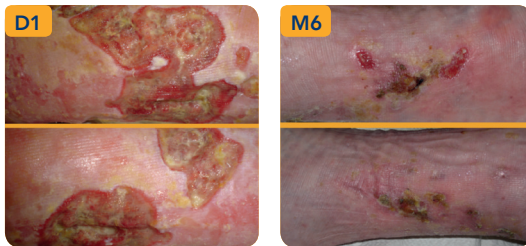
Positively evaluated in over 390 patients

Bilateral Venous Leg Ulcer

Clinical signs of infection: pain, offensive odour and excessive exudate

Treated with Activon® Tulle and Activon® Tube

Reduction in pain, exudate and odour by 2nd dressing change. Almost healed within 6 months



Extensive necrotic foot ulceration

Patient with Type II Diabetes with peripheral neuropathy

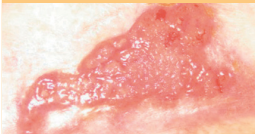
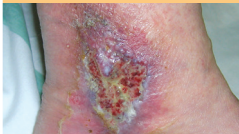


Autolytic debridement with Algivon® and Activon® Tube

Healed within 16 weeks



Activon Manuka Honey dressing selection guide

Using the best Activon® Manuka Honey dressing according to wound healing objective will improve outcomes. Always use an appropriate secondary dressing to manage the wound's exudate levels (e.g. Advazorb® foam for low to moderate exudate or Eclipse® superabsorbers for moderate to high exudate).

naturally anti-microbial with no known resistance		safe and effective debridement and desloughing	
deodorising action to reduce malodour			
wet	dry	necrotic*	sloughy
			
Algivon® Plus Algivon®	Actilite®	Activon® Tulle Activon® Tube	Algivon® Plus Algivon® Activon® Tube

**If wound is dry and ischaemic, seek advice before rehydrating.*

Ordering information

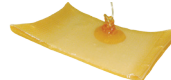
Activon Tube



With Activon® Manuka Honey

Size	Stock code	Pack size	NHS code	PIP code
25g	CR3830	12	ELZ069	319-3729

Activon Tulle



With Activon® Manuka Honey

Size	Stock code	Pack size	NHS code	PIP code
5x5cm	CR3761	5	EJE027	304-0631
10x10cm	CR3658	5	EJE028	304-0623

Algivon



With Activon® Manuka Honey

Size	Stock code	Pack size	NHS code	PIP code
5x5cm	CR3831	5	n/a	319-3711
10x10cm	CR3659	5	n/a	319-3703

Algivon Plus



With Activon® Manuka Honey

Size	Stock code	Pack size	NHS code	PIP code
5x5cm	CR4230	5	ELS549	374-9496
10x10cm	CR4225	5	ELS550	374-9512
2.5x20cm	CR4231	5	ELS551	374-4653

Actilite



With Activon® Manuka Honey

Size	Stock code	Pack size	NHS code	PIP code
5x5cm	CR4281	10	EJE079	379-3759
10x10cm	CR3849	10	EJE042	335-4917
10x20cm	CR3852	10	n/a	335-4925
20x30cm	CR4366	10	EJE163	398-8078
30x30cm	CR4367	5	EJE164	398-8086
30x60cm	CR4368	5	EJE165	398-8094